

瑞雷净化
Hefei Really
Purifying Equipments

瑞雷净化
Hefei Really Purifying Equipments



合肥瑞雷净化设备有限公司
Hefei Really Purifying Equipments Co., Ltd.
地址: 安徽省合肥市南宁路万达银座C-1109
Add: C-1109, Wanda Ginza, Nanning Road, Hefei, Anhui, China
Tel: +86-551-65621089, Fax: +86-551-65603472
<https://www.hrpuri.com>
E-mail: exp@hrpuri.com



WeChat



WhatsApp

专注环保事业 创造美好生活
CONCENTRATE ON ENVIRONMENTAL
PROTECTION & CREATE A BETTER LIFE



Values: Focus, innovation, integrity & win-win

Vision: Become a benchmark in the filter industry

Mission: Provide users with high-quality products with ultra-low emissions



企业介绍 Company Profile



合肥瑞雷净化设备有限公司成立于1996年，位于包公故里，巢湖之滨的安徽省会合肥市。

瑞雷净化是中国环境保护协会会员单位，2016年被合肥市人民政府授予“市企业技术中心”是安徽省重点科技型企业，国家高新技术企业。瑞雷净化专业从事滤料、滤袋研发和生产，一直与国内多所高级院校和科研单位保持紧密技术协作关系。产品创新及开发能力极强。公司研发产品在2016年获中国纺织工业联合会科学技术进步一等奖，2017年又荣获国家科学技术进步二等奖，是目前国内滤料行业唯一获得国家最高奖的企业。瑞雷净化专业从事大气粉尘污染的整治，主要业务为袋式除尘器核心部件高性能滤料，滤袋的研发，生产和销售，产品广泛应用于水泥，火力发电，垃圾焚烧，钢铁，冶炼，化工等行业的烟气排放治理。公司现拥有发明专利近10项，实用新型专利30余项，注册商标3项，通过ISO9001-2008质量体系认证。

瑞雷净化在注重企业发展的同时，一直积极参与社会公益事业，回报社会，在2017年7月公司投入一千多万成立了宇邦阳光残障庇护中心，现中心赡养各类残障人员70多人，彻底解决了每个残障人员家庭的后顾之忧。

Hefei Really Purifying Equipments Co., Ltd(hereafter referred as HRPURI) was established in 1996 with a registered capital of 80 million RMB .It is located Hefei City, capital city of Anhui.

HRPURI is a member of China Environmental Protection Association, and was awarded the title "Hefei Enterprise Technology Center" by Hefei Government as a key technology-based enterprise in Anhui Province and a national high-tech enterprise in China. HRPURI specializes in the research, development and production of filter materials and filters bags. With good relationship and technical cooperation with many advanced universities and research institutes in China, the company has excellent innovation ability and strong R&D resources. The company's research and development won the first prize of Science and Technology Progress of China Textile Industry Federation in 2016, and won the second prize of National Science and Technology Progress Award in 2017, as the only enterprise in the domestic filter material industry that has won the highest national award. HRPURI always focuses in the remediation of atmospheric dust pollution. Its main products are high-performance filter materials for core components for bag filters and filters bags, which are widely used in cement, thermal power generation, waste incineration, steel, smelting, chemical industry and other industries to control the dust emissions. The company now has nearly 10 invention patents, more than 30 utility model patents, 3 registered trademarks, and has gained ISO9001-2008 quality system certification.

While dedicated in enterprise development, HRPURI also pays active attention in social welfare undertakings to make contributions to the society. In July 2017, the company invested more than 10 million to establish the HRPURI Sunshine Center for the Disable, which has provided supports to more than 70 disabled people, helping them solve various problems and difficulties in their families.



生产线
Production Line

公司拥有先进的针刺、后处理、缝纫、热熔等生产设备，高效能高品质的产出，能满足大部分国内外采购需求。

We owns advanced production lines, including needle punching equipment, finishing equipment, sewing equipment, welding equipment and etc. High-quality and high-efficiency output can meet different needs home and abroad.



检测设备

Test Equipment

公司成立了以产品性能保证及产品研发、可靠性验证为主的综合实验室。确保出厂产品的性能指标满足规定要求。

We've set up a comprehensive test room mainly for product performance assurance, product development and reliability validation. Guarantee each set of outgoing products conformity with the performance requirement.





常温针刺过滤毡 Normal temperature Needle Punched Felt

常温针刺过滤毡耐温等级适中，是一种高效的常温滤材，该产品耐磨、耐折、透气性好，经后整理后表面光滑、清灰效果好，是适用于钢铁、水泥、化工、碳黑、发电等行业袋式除尘器的滤袋材料。

The Room temperature needle punched felt have moderate temperature-resistance. It is effective normal temperature filter material. Good air permeability, great twist-resistance & abrasion-resistance, and effective dust-cleaning performance. Suit for fabric filters dust collector which used in steel, cement, chemical, carbon black and power generation industry.

特性 Specifications

品名 Article name	克重 Weight (g/m ²)	厚度 Thickness (mm)	透风量 Air permeability (m ³ /m ² .min)	耐温 Temperature Resistance (°C)		热收缩率 Thermal Shrinkage Rate (%)	
				连续	瞬间	径向	纬向
涤纶针刺过滤毡	450-700	1.6-2.2	8-18	130	150	≤1	≤1.5
丙纶针刺过滤毡	400-600	1.6-2.4	8-20	80	100	≤1	≤1.5
亚克力针刺过滤毡	500-600	1.8-2.2	8-20	130	150	≤1	≤1.5
覆膜常温针刺过滤毡	450-600	1.6-2.2	2-4	130	150	≤1	≤1.5



常温针刺过滤毡滤袋系列 Normal temperature needle punched felt series



涤纶针刺毡 Polyester Needle Felt

该品种采用涤纶纤维在涤纶长丝布上针刺而成，并采用烧毛压光、定型等后整理工艺，滤料具有空隙率高、耐磨、耐折、透气性好等优点，是目前被广泛使用的一种常温过滤材料。
Polyester needle punched felt is made from polyester fabric by needle punch, and treat with singeing, calendaring process. This material has good friction resistance, high porosity, good twist resistance, good air permeability. It is a kind of widely applied normal temperature filter material.



易清灰涤纶毡 Easy-cleaning Needle Punched Felt

该品种是经过特殊后整理工艺处理后的涤纶过滤毡，产品表面光滑、平整，可以有效降低粉尘附着，除尘器反吹时粉尘易于脱落，清灰效果好，从而有效的提高除尘过滤效果。
This product is a type of polyester which treated by special process. It has smooth surface, so when dust collector reverse blowing the dust on the surface very easy to clean up, then improve the filtering effective of dust collector.



覆膜针刺毡 PTFE Membrane Needle Punched Felt

PTFE覆膜针刺毡是在普通滤料表面复合一层聚四氟乙烯（PTFE）薄膜而成的一种新型滤料。覆膜滤料表面光滑且耐化学物质，过滤时能将粉尘全部截留在膜的表面，可实现表层过滤。覆膜针刺毡具有剥离强度高、透气量大、阻力小、孔径分布集中均匀等特点，能有效地截留以微米来计算的超细粉尘，除尘效率达99.99%以上。
PTFE membrane felt is a kind of filter material, which is coated on its surface. The surface of PTFE membrane felt is smooth and anti-chemistry. It can stop dusts getting into inner, and surface filter can be realized. Compared with normal filter material, PTFE membrane felt has higher peel strength and air permeability, lower pressure drop, and efficiently prevents ultra-fine dust measured in microns. Filtration efficiency is up to 99.99%.



抗静电涤纶毡 Anti-static Needle Punched Felt

防静电涤纶针刺毡属于常温防静电滤材产品，该产品是在滤料基布加入特殊的导电纤维，从而有效防止电荷的积累而起到防静电作用。适用于煤粉尘、面粉尘、化工粉尘等易燃易爆的高浓度粉尘的烟气过滤环境。该产品有条型和混合型两种。
It is a normal temperature anti-static electricity filter material special conductive fiber been added into the polyester fabric, that will prevent accumulation of charge then the felt could anti-static electricity. This product applied in coal dust, chemical dust, high concentration flammable and explosive dust flue gas filtering. There are two types of Anti-Static PET felt: Gray color lines appearance (Scrim Anti-Static), and whole gray color (Anti-Static & Normal PET fabrics blend). This is Scrim Anti-Static.



拒水防油针刺毡 Oil & Water Repellent Needle Punched Felt

该涤纶毡是在普通涤纶毡生产基础上进行特殊的防水处理，使滤料具有良好的憎水拒油性能，从而用在含湿、含油量较大的烟气处理中，抗结露性能好，不易糊袋，可以有效的提高滤袋的使用寿命。
This polyester felt is made based on normal polyester felt, treated by special waterproof process make the felt has good oil & water resistance performance. The product applied for heavy humidity, oily flue gas cleaning. It prevented better and not easy to wet bag. Prolong the service life of filter bag effectively. If needed, it can also be combined with Anti-Static function.



亚克力针刺毡 Acrylic Needle Punched Felt

亚克力滤料（共聚丙烯腈），具有很好的耐酸性、耐碱性和耐水解性。正常使用温度为125℃以下，瞬间使用温度150℃，可广泛应用于含化学性质工况条件下的粉尘治理与回收。
Acrylic felt has excellent acid resistance, alkali resistance and hydrolysis resistance. Recommended maximum continuous working temperature is 125℃, and maximum surge temperature is 150℃. It can be widely used in complexly chemical working conditions, of dust treatments and recycling.



耐高温化纤针刺过滤毡 High-temperature chemical fiber Needle Punched Felt



广泛的应用于钢铁、水泥、电力、化工、垃圾焚烧、混凝土搅拌等工况条件复杂的行业。
 耐高温化纤针刺毡系列是我公司生产开发的耐高温化纤过滤产品，采用耐高温化纤针刺而成，并经过定型、烧毛、热压等后处理工艺。产品包括：PPS毡、芳纶毡、P84毡和PTFE毡，使用温度可达180℃-260℃。根据选用材料的不同可满足260℃以下各种工况条件的烟气过滤。该系列产品是一种高效的过滤材料，耐曲折性好、耐磨性好、容尘较少、清灰效果好，随品种的不同而具有耐酸、抗水碱等优良特性。
 It is widely used in steel, cement, electricity, chemicals, waste incineration, concrete mixing and other conditions of complex industries. High-temperature chemical fiber needle punched felt series are developed by our company. It is made by high temperature resistance chemical fiber and treated with stereotypes, singeing, hot embossing, etc.
 This series including:
 PPS felt, Aramid felt, P84 felt and PTFE felt. The operation temperature is between 180℃-260℃. According to the different material, this series can satisfy any flue gas cleaning process. It is a kind of high-temperature resistance filter material, good twist resistance, good wearing resistance great dust cleaning effective. Also can anti-alkali, and tensile depends on material.

特性 Specifications

品名 Article name	克重 Weight (g/m ²)	厚度 Thickness (mm)	透风量 Air permeability (m ³ .m ² .min)	耐温 Temperature Resistance (°C)		热收缩率 Thermal Shrinkage Rate (%)	
				连续	瞬间	径向	纬向
PPS针刺过滤毡	400-650	1.4-2.2	8-20	160	190	≤1	≤1.5
P84针刺过滤毡	500-600	1.8-2.4	8-20	250	280	≤1	≤1.5
PTFE针刺过滤毡	650-800	0.8-1.2	8-20	240	260	≤1	≤1.5
芳纶 (Nomex, Conex)	450-550	1.7-2.4	8-20	204	240	≤1	≤1.5



耐高温化纤针刺过滤毡系列 High-temperature chemical fiber Needle punched felt series

PPS针刺毡 PPS Needle Punched Felt



PPS针刺毡是采用PPS纤维（聚苯硫醚）经三维针刺而成的一种过滤材料，可在190℃左右温度长期使用。PPS纤维也称聚苯硫醚纤维，由于其特殊的分子结构，而具有很好的化学稳定性和强度完整保持特性，在含硫较高的烟气环境中效果尤为凸显，适用于燃煤锅炉、电力、垃圾焚烧等酸性较高的烟气过滤环境。PPS needle punched felt is a kind of filter material which made by PPS fiber in 3D needle punch method, Operation temperature is around 190℃ and have long service life. PPS fiber also named as polyphenylene sulfide. It is very stable because of it's symmetrical, rigid backbone chain. PPS used for sulfur-containing flue gas cleaning such as coal-fired power plant, coal-burning boilers industry, etc.

芳纶针刺毡 Aramid Needle Punched Felt



芳纶（俗称：芳香族聚酰胺纤维），长期耐温204℃，瞬间耐温240℃，耐碱性能很强，耐酸性能中等，是处理180-220℃高温性气体的良好材料。芳纶针刺毡，广泛应用于钢铁、水泥、化工等行业，是一种理想的烟气除尘过滤材料。Aramid (known as aromatic polyamide fiber), long-term operation temperature is 204℃, instant 240℃ is fine, excellent anti-alkali, anti-acid is fair, aramid is a great material for treat 180℃-220℃ gas. Aramid needle punched felt widely applied in steel, cement, chemical industry, etc.

P84针刺毡 P84 Needle Punched Felt



P84针刺毡采用P84纤维三维针刺而成，P84纤维（即聚亚酰胺纤维）具有很好的耐高温性能，耐高温达260℃，且P84纤维截面呈不规则叶状，可以大大提高过滤效果。纤维本身还有一定的抗水解、抗氧化性。该产品耐温性好、过滤效果好、广泛地适用于混凝土搅拌、水泥、垃圾焚烧、燃煤锅炉等复杂工况条件下使用。P84 needle punched felt is made by P84 fiber in 3D needle punch method. P84 fiber (polyimide fibers) is good at high temperature resistance, even can be use at 260℃. P84 fiber irregular leaf-shaped section, that improve filtering and anti-oxidation. It wildly applied in cement, coal burning boiler, cement, garbage incineration industry, ect.

PTFE针刺毡 PTFE Needle Punched Felt



PTFE针刺毡是采用PTFE（聚四氟乙烯纤维）经三维针刺而成的一种过滤材料。PTFE纤维为大分子线性结构，因而具有极强的耐温、耐磨、耐腐、耐化学稳定性，广泛适用于钢铁、电力、垃圾焚烧等各种恶劣的烟气过滤环境。PTFE needle punched is kind of filter material made by PTFE in 3D needle punch method. PTFE (polytetrafluoroethylene) has high molecular weight, and with macromolecular linear structures. So, PTFE is very non-reactive, anti-corrosion, good wearing-resistance, great high temperature resistance, widely applied in steel, power plant, waste incineration industry.



玻纤高温复合针刺毡 High-temperature fiberglass Compound Needle Punched Felt

玻纤高温复合针刺毡滤料是采用玻纤与一定比例的耐高温化纤复合针刺而成的一种过滤材料。它具有耐高温、高强度、耐腐蚀、耐磨、耐折等特点，通过化纤与玻纤的复合，有效的提高其耐磨、抗折性及毡层的剥离强度。不同纤维混纺，对于玻纤毡加工性能改进有重大意义。根据复合高温化纤的不同，其耐温可达180 C-260 C。它被广泛应用于钢铁、水泥、电力、有色金属、垃圾焚烧、沥青混凝土搅拌、化工等行业。The compound filter materials are the latest developed products, for achieving comprehensive good performance to resist high-temperature, wearing, folding broken, corrosion, and get higher strength on tension and felt fiber stripping. The advantage of fiber blend fabrication, is especially important with Glass Fiber felt, to rapidly improve the processing performance: no or minimize the damage to the filtration felt during processing. With various blending solution, & treatment to the surface, the felt products can combine various features in one: clean up the dust, water & oil resistance, anti-statics. Working temperature ranges: 180 C~260 C. It is widely used in metallurgical industry, cement & nonferrous metal industry, chemical industry, Building material industry, power industry, etc.

特性 Specifications

品名 Article name	克重 Weight (g/m ²)	厚度 Thickness (mm)	透风量 Air permeability (m ³ /m ² .min)	耐温 Temperature Resistance (°C)		热收缩率 Thermal Shrinkage Rate (%)		
				连续	瞬间	径向	纬向	
玻纤化 纤复合 针刺毡	PPS复合	900±50	2.2-2.8	22±5	190	232	≤1	≤1.5
	芳纶复合	900±50	2.2-2.8	22±5	204	240	≤1	≤1.5
	P84复合	900±50	2.2-2.8	22±5	260	280	≤1	≤1.5
	PTFE复合	900±50	2.2-2.8	22±5	280	300	≤1	≤1.5



玻纤高温复合针刺毡系列 High-temperature fiberglass compound needle punched Felt series



玻纤/PPS复合毡 Fiberglass/PPS Compound Felt

该产品是采用无碱玻璃纤维与一定比例PPS纤维混合针刺而成，PPS纤维以其出色的耐酸碱和抗氧化性能及耐磨、耐折优点，使得复合毡正常耐温达190℃，短时可达240℃，适用于热电、垃圾焚烧、燃煤锅炉等含硫较高的烟气过滤。

This product is made from non-alkali fiberglass mix PPS fiber. PPS fiber has good anti-alkali, anti-oxidation and good wearing resistance performance. So the compound felt can working at 190°C, and short-term 240°C. Applied in coal, fired power plant, waste incineration coal burning boilers industry for sulfur-containing fule gas cleaning.



玻纤/芳纶复合毡 Fiberglass/Aramid Compound Felt

该产品是采用无碱玻璃纤维与一定比例的芳纶纤维混合针刺而成，芳纶纤维以其耐高温、耐腐蚀、韧性好的性能，使得复合毡防腐性、耐磨性增强。正常使用温度为220℃，短时可达240℃，适于用钢铁、水泥、热电等行业的烟气过滤。

This product is made from non-alkali fiberglass mix with Aramid fiber. Aramid fiber has high temperature resistance, anti-corrosing performance. The compound felt's operation temperature is 220°C, short-term 240°C, applied in steel cement, coal fired power plant industry for flue gas cleaning.



玻纤/P84复合毡 Fiberglass/P84 Compound Felt

该过滤材料由玻璃纤维与P84纤维进行混合针刺而成，P84纤维有很好的耐高温并有一定的抗水解与抗氧化性能，纤维截面呈叶片状，可有效提高过滤效果。P84复合毡的耐高温性可达260℃，具有很好的耐磨、耐折性能和耐腐蚀性能。产品适用于钢铁、水泥、冶炼、垃圾焚烧、热电等高温烟气过滤。

This filter material made from fiberglass mix with P84 fiber. P84 good at high temperature resistance also have anti-hydrolysis and anti-oxidation performance. The fiber section is leaf-shape which improve filtering efective. P84 compound felt works at 260°C, has great wearing resistance, great twist resistance and great anti-corrosing performance. Applied in steel, cement, casting, waste incineration, coal fired power plant industry, etc.



玻纤/PTFE复合毡 Fiberglass/PTFE Compound Felt

该复合毡是采用玻璃纤维与一定比例PTFE纤维进行针刺而成的复合过滤材料，PTFE纤维由于其特殊的分子结构而具有非常好的耐腐蚀性能。适用于钢铁、电力、垃圾焚烧、沥青混凝土搅拌等各种复杂环境的烟气过滤。

This compound felt is made from fiberglass mix with PTFE fiber. PTFE has excellent corrosing resistance performance. Because of it's special construction. Applied in steel power plant waste incineration, asphalt industryfor variety flue gas.



超细旦湿法精滤面层的水刺滤料
Spunlace filter material for ultrafine wet process fine filtration surface

创新点 / INNOVATION

超细旦纤维面层：纤维直径可在几甚至1um以下。

湿法成网：成网更均匀、铺网克重更小，解决超细旦纤维梳理难的问题。

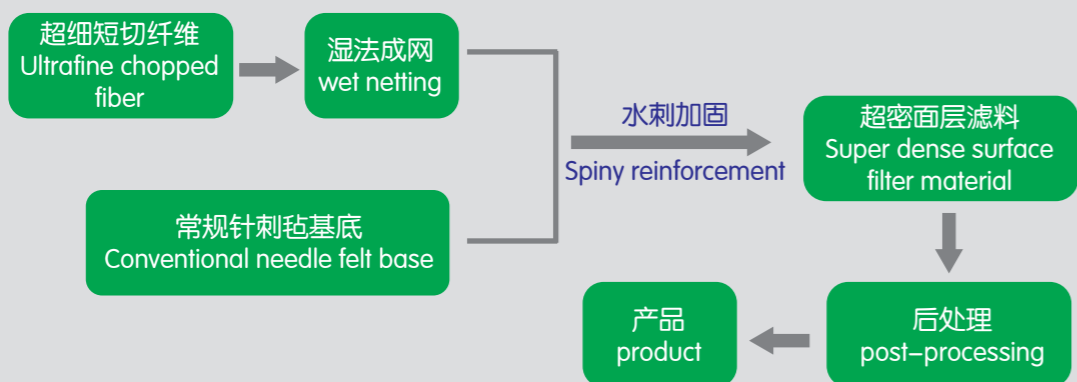
水刺加固：显著降低滤料孔径，提高微细粒子捕集效率。

Ultrafine fiber coating: fiber diameter can be several or even less than 1um.

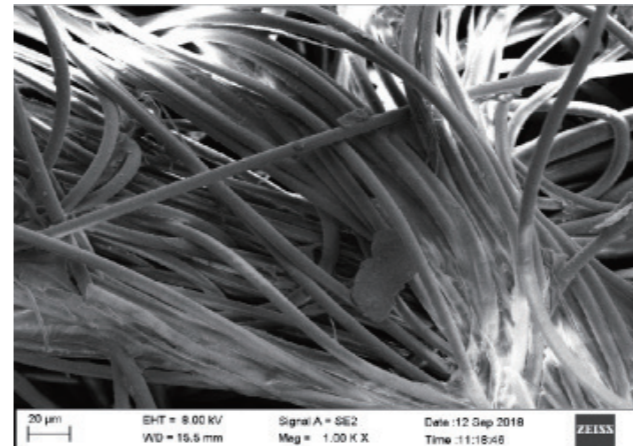
Wet netting: the netting is more even, the net weight is smaller, solve the problem of super fine fiber carding.

Spiny reinforcement: significantly reduce the pore size of filter material, improve the efficiency of fine particle collection.

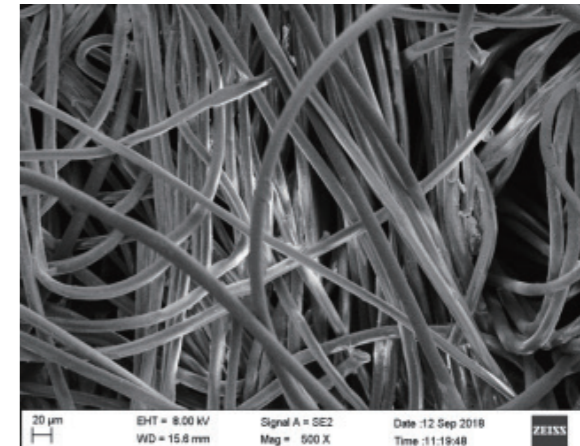
工艺流程 / PROCESS



面层 Surface layer



底层 Bottom layer

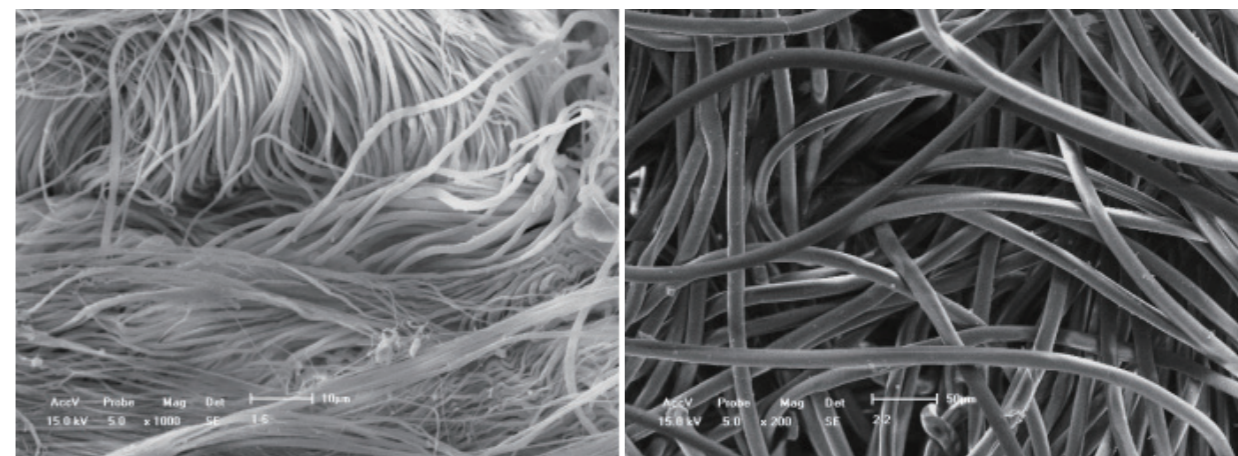


面层纤维直径可以更细，使迎尘面层更致密，捕集效率更高、清灰性能更优。

底层粗纤维作为支撑，充分保证了滤料的机械强度及使用寿命。

The fiber diameter of the surface layer can be thinner, making the dust face layer denser, with higher collecting efficiency and better ash cleaning performance.

The bottom coarse fiber as a support, fully ensure the mechanical strength and service life of the filter material.



梳理难度随纤维直径变细而加大，5um以下纤维难以梳理。

湿法成网可以完美解决该难题，不仅成网均匀，而且克重可以很低。

完美解决微米、甚至亚微米纤维梳理难题。

The carding difficulty increases with the fiber diameter becoming fine, and it is difficult to carding the fiber below 5um.

Wet netting can solve this problem perfectly, not only the netting is uniform, but also the gram weight can be very low.

Perfect solution to micron, or even sub-micron fiber carding problems.



资质证书 Certificates

宇邦专业研发和生产环保滤材，获得了各种认证与证书。

YUBANG is a professional enterprise specialized in R&D, and manufacturing various filter materials for environmental protection. It has won various patents and certificates.



售后服务 After-sale Service

客户工况分析

根据客户提供的数据或现场实测，全方位了解客户的工况（烟气特性及变化，使用除尘系统情况），做出准确细致的工况分析；

滤料选型指导

根据工况数据分析总结，为客户挑选“最佳”产品方案；

滤料产品提供

为客户提供高质量的滤袋产品；



滤袋安装指导

派专业安装人员亲临现场进行安装指导，保证滤袋正确安装，以最优状态使用运行；



Protect Environment

维护运行指导

滤袋在安装使用后，将提供产品的维护运行指导，保证产品使用寿命；



实时故障排除服务

滤袋出现使用故障，第一时间派售后专员为客户检查，排除故障，用最短的时间解决问题；



新产品早体验

定期为在档客户提供“新”产品信息，共同发展进步。



完善的客户档案管理

对每个客户都建立独立、完善的客户信息及安装、使用回访档案，以确保更好的与客户建立联系；



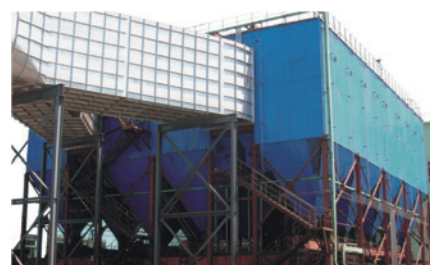
定期免费检测

滤袋投放使用后，提供每年一次的免费检测服务，及时发现潜在问题，提高产品使用寿命；



应用领域 Application fields

产品广泛应用于冶金、钢铁、水泥、机械、化工、电力、轻工等行业含尘气体净化和物料回收。我们贯彻“质量第一、坚持不懈、一丝不苟”的精神。不断开发新产品，相信优秀的品质一定能满足您的需求。
HRPuri products are widely used for purifying dusty air in industries like metallurgy, steel, cement, mechanical, chemical, power plant and so on.



▲ 钢厂电炉除尘 Steel mill



▲ 电解铝除尘 Electrolytic aluminum



▲ 发电厂除尘 Power plant



▲ 水泥厂窑头窑尾除尘 Cement Factory



▲ 水泥厂窑头窑尾除尘 Cement Factory



▲ 热电厂垃圾焚烧除尘 Waste Incineration

合作伙伴 Valued customers

二十多年发展历程中，宇邦始终坚持“诚信为本、质量第一、服务优良、合作互利”的经营理念，与数百个客户保持着长期良好的合作关系。以下是部分合作伙伴。

We follow strong business ethics and work with view of establishing long-term business relationship with our customers. Our valued customers include the following.





滤材选用参考表

Reference List for Filtration Materials Selection

品名	连续使用温度 (°C)	瞬间使用温度 (°C)	化学性能				适用工况	应用领域
			耐酸性	耐碱性	抗氧化性	抗水解性		
丙纶	80	100	★★★★	★★★★	○	★★★★	适合在湿度较低工况下使用	化工、煤粉、医药等
涤纶	130	150	★★★★	○	★★	★	应用范围广，常温条件下使用时，寿命受含水量影响较大	电力、水泥等众多领域
亚克力	130	150	★★★★	★★	★★	★★	耐酸碱性能优异，适合温度较低、化学成分复杂的工况	钢铁、水泥、化工、铸造、冶金、食品加工等
PPS	160	190	★★★★	★★★★	○	★★	抗酸碱能力较强，抗氧化能力较差。在燃煤锅炉中大量应用	电力、化工、垃圾焚烧、金属熔炼等
芳纶	204	240	★	★★	★★	★	具有优异的耐磨耐折阻燃性能，适用范围广	钢铁、水泥、沥青搅拌、陶瓷、玻璃等
P84	250	280	★★★★	★★	★★	★★	适合较高温度下使用，具有独特的截面形状，过滤效率高	化工、垃圾焚烧、水泥、燃煤锅炉等
PTFE	240	260	★★★★	★★★★	★★★★	★★★★	具有优异的抗化学腐蚀性，适合在化学成分复杂、温度较高工况下使用	化工、垃圾焚烧、水泥、燃煤锅炉、高腐蚀性行业等
玻纤	280	300	★★	★★	★★★★	★★★★	适合在温度较高工况下使用，耐酸碱性能较好，但氢氟酸对材料影响最大，耐折性能较差	水泥、铁合金、化工、有色金属冶炼等

Article name	Continuous working temperature (°C)	Instant working temperature (°C)	Chemical performance				Application	Industries
			Acid resistance	Alkali resistance	Oxidation resistance	Hydrolyzation resistance		
Polypropylee	80	100	★★★★	★★★★	○	★★★★	Suitable in low humidity conditions.	Chemistry, coal powder, medicine, etc.
Terylene	130	150	★★★★	○	★★	★	Wide applications, lifetime will be highly influenced by moisture content under normal temperature	Power, cement and etc.
Pmma	130	150	★★★★	★★	★★	★★	Excellent acid & alkali performance, suitable in low temp and complicated chemical composition conditions.	Steel, cement, chemistry, foundry, metallurgy, food, etc.
PPS	160	190	★★★★	★★★★	○	★★	Good in acid & alkali resistance, poor in oxidation resistance. widely used in coal boiler.	Power, chemistry, incineration, metallurgy, etc.
Aramid	204	240	★	★★	★★	★	Excellent abrasion, fold resistance and flame-retardant, wide applications.	Steel, cement, asphaltum mix, ceramic, glass, etc.
P84	250	280	★★★★	★★	★★	★★	Suitable in high temp. conditions, special section form for high efficiency.	Chemistry, incineration, cement, coal boiler, etc.
PTFE	240	260	★★★★	★★★★	★★★★	★★★★	Excellent in anti-chemical corrosion, used in complicated chemical compositions and high temp conditions.	Chemistry, incineration, cement, coal boiler, corrosive, etc.
Fiberglass	280	300	★★	★★	★★★★	★★★★	Suitable in high temp. conditions, fine acid & alkali resistance, poor in foldresistant and highly influenced by HF acid.	Steel, cement, asphaltum mix, ceramic, glass, etc.

※本表数据是在实验条件下测定所得。由于实际应用中工况条件不尽相同，故上述数据仅供参考
 ★★★★★表示优，★★★★表示良，★★★表示一般，○表示较差

※The above-list date was approved in lab, which is different from practical conditions, just for your reference.
 ★★★★★=Excellent; ★★★★=Fine; ★★★=Ordinary; ○=Bad.



阳光庇护中心 Sunshine Shelter Center



阳光庇护中心是由浙江宇邦滤材科技有限公司承办的，集智力、精神残疾人托管、康复、文体娱乐及就业等多元化服务功能于一体的工疗机构，2017年前8月正式投入运行。

阳光庇护中心现有残疾员工80人，总面积3550平方米，共有四层，分别设有一站式服务大厅、展厅、谈心室、康复室、工疗车间、乒乓球室、多功能厅等区块，另有食堂、餐厅、男女浴室、场外活动区、车库和凉晒场等辅助用房。中心以“阳光助残、拥抱明天”为宗旨，通过公疗、药疗、娱乐和心理辅导的“三疗一辅导”模式，拓宽渠道，创新形式，丰富内容，努力提高庇护中心管理服务水平，使员工在中心能感受家的温馨，享受宾馆一样的服务，在花园一样的环境中工作、学习和生活。



Sunshine Shelter Center is an industrial and therapeutic institution which provides diversified services such as intelligence, mentally handicapped trusteeship, rehabilitation, recreation and entertainment service and employment. It is organized and put into operation since August 2017.

The developing of our Sunshine Shelter Center owing to the support of 80 disabled employees, and benefit from the four-floor building which covers an area of 3550 square meters totally, and composes of one-stop service hall, exhibition hall, chatting room, rehabilitation room, work-therapy workshop, table tennis room and multifunctional hall. Additional supported with canteen, dining room, bathrooms for men and women, outdoor activity area, as well as garage and cold sun court.

To improve the management and service level of the shelter center, we followed through the service aim of "bring sunshine for the disabled and embracing tomorrow". With the model of "three therapies and one counseling" that is public therapy, medication, recreational therapy and psychological counseling, we have broadened our channels, realized form innovation and enriched the contents of the center. All the efforts made above provide a kind of hotel-like service, so that make our employees feel the warmth of home and enjoy working, studying and living in a garden-like environment.

